






GROOVE BRICK

version 21/08/2020
replaces 9/04/2020

Manufacturing type	Herstellungsart	Mode fabrication	Productie methode	tufted 1/10"	
Construction	Struktur	Structure	Structuur	structured loop pile	
Pile composition	Polmaterial	Couche d'usure	Pool Samenstelling	100% PA 6 - Econyl®	
Dye method	Farbgestaltung	Coloration	Kleurverwerking	50% SD - 50% space dyed	
Primary backing	Trägermaterial	Premier dossier	Tuftdoek	non-woven	
Secondary backing	Rückenausrüstung	Dossier	Rug	action backing	
Pile weight	Poleinsatzgewicht	Poids de velour	Poolgewicht	ISO 2424	g/m2 620 (+/-)
Total weight	Gesamtgewicht	Poids total	Totaal gewicht	ISO 8543	g/m2 1.900 (+/-)
Pile height	Polhöhe	Hauteur du velours	Poolhoogte	ISO 1766	mm 4,0 (+/-)
Total height	Gesamtdicke	Epaisseur totale	Totale dikte	ISO 1765	mm 6,5 (+/-)
Tuft density	Noppenzahl	Nombre de touffes	Aantal punten	ISO 1763	/m2 190.000 (+/-)
Width	Breite	Largeur	Breedte		cm 400 (+/-)
Classification	Klassifikation	Classement	Gebruiksklasse	EN 1307	33 heavy commercial
Comfort rating	Komfortklasse	Classement confort	Comfort klasse	EN 1307	LC 2
Castor chair	Stuhlleneignung	Chaise à roulettes	Rolstoelgeschikt	EN 985	A intensive
Stair suitability	Treppeneignung	Escaliers	Trappengeschikt	EN 1963	A intensive
Fire resistance	Brennverhalten	Comportement feu	Brandgedrag	EN 13501-1	Bfl-S1 glued
Permanent antistatic	Permanent Antistatisch	Antistatique permanent	Permanent antistatisch	ISO 6356	kV ≤ 2,0
Transversal resistance	Durchgangswiderstand	Résistance transversale	Doorgangsweerstand	ISO 10965	Ω ≤ 10⁹
Thermal resistance	Wärmedurchlaßwiderstand	Résistance thermique	Warmteoorlaatweerstand	ISO 8302	m2/K/W 0,066
Sound absorption	Schallabsorptionsgrad	Absorption phonique	Geluidsabsorptie	ISO 354	α _w 0,15
Impact sound reduction	Trittschallverbesserungsmaß	Isolation phonique	Geluidsisolatie	ISO 10140	ΔL _w 23 dB
				ISO 10140	ΔL 35 dB (1000 Hz)
Colour fastness light	Lichtechtheit	Solidité à la lumière	Lichtechtheid	ISO 105 B02	6-7
Rubbing fastness	Reibechtheit	Solidité au frottement	Wrijftechtheid	ISO 105 X12	4-5 wet/dry
Water fastness	Wasserechtheit	Solidité à l'eau	Waterechtheid	ISO 105 E01	4-5 colour/staining



 20 EN 14041 DOP 000622A-001	   
	EN 1307 for use as floorcovering in buildings (EN 14041) according to the manufacturer's specification


 TÜV Emission testing
 Results comply with emission threshold of

- AgBB - Germany
- Belgian VOC regulation
- BREEAM Exemplary level
- French VOC regulation
- LEED V4 (outside North America)


 tested for emissions, harmful substances


 A+ A B C

ECONYL®
ENDLESS POSSIBILITIES

CARPET TILES

also available 50 x 50 bitumen backed tiles



These technical details are approximate. Complete specification details and associated certificates together with tolerances applying to the above can be provided upon request, if available. We reserve the right to alter specifications without notice. Due to the method of manufacture, perfect pattern/colour matching cannot be guaranteed.

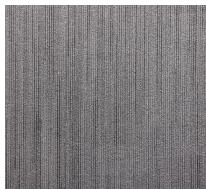
Shading/pile reversal might occur in cut pile carpets, without affecting overall quality and suitability. It is not considered as a manufacturing fault.

GROOVE BRICK

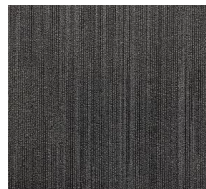
Light Reflectance Value (LRV) is the total quantity of visible light reflected by a surface, e.g. floorings, ceilings, walls and furniture, at all wavelengths and directions when illuminated by a light source. The LRV scale runs from 0, which is a perfectly absorbing surface that could be assumed to be totally black, up to 100 which is a perfectly reflective surface that could be considered to be the perfect white. Because of practical influences in any application, black is always greater than 0 and white never equals 100. Additional to colour, the structure and gloss of the product or surface are determining factors for LRV.



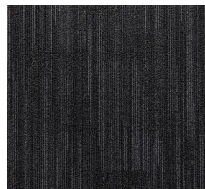
622-22 LRV 13



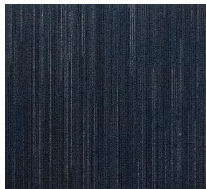
622-40 LRV 16



622-42 LRV 8



622-50 LRV 5



622-62 LRV 5



622-65 LRV 6



623-85 LRV 6

LRV test according to BS 8493:2008+A1:2010

Observer – 2° / Illuminant – CIE D65 / Illumination/Viewing System – Wide Area Illumination / Source – Pulsed xenon lamp

Equipment : Konica Minolta / Chroma Meter CR-410
